



# NZSG New Plymouth Branch Newsletter



p



Number 210

March 2008

**Convenor:** Annette Larsen Ph 758 3320  
**Treasurer:** Lea Bellini Ph 758 0130  
**Secretary:** John Pickering Ph 758 4952

**Committee:** Marilyn Armitstead, Judy Berntsen,  
John Berntsen, Michael Butler,  
Karen Crowe, Elly Harrison,  
Marjorie McMahon, Mike Merrick,  
Marilyn Reid

**Editor:** Peter Wicky  
Email- [wicky.family@ihug.co.nz](mailto:wicky.family@ihug.co.nz)

**New Plymouth Branch**  
**P.O. Box 429,**  
**New Plymouth 4340**

**Meetings:** 1<sup>st</sup> Tuesday each month  
at Branch Rooms, Moturoa  
Shopping Centre  
access off Whiteley St Carpark

**Email:**  
[newplymouth@genealogy.co.nz](mailto:newplymouth@genealogy.co.nz)

**Website:**  
<http://www.genealogynp.com>

**Branch Library:** open free to members and to visitors for a small charge.

**Opening Hours:** **Monday:** 10am to 3pm **Wednesday:** 12noon to 3pm  
**Friday & Saturday:** 10am to 12 noon

**Computer Group:** meets every 3<sup>rd</sup> Sunday at 1.30pm in Branch Rms except in December and January. All welcome- \$2 door charge. **Convenor-** John Bernsten. **Secretary-** Bruce Bellini.

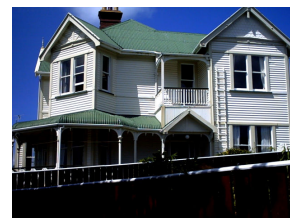
## **BRANCH NEWS**

### **February 5<sup>th</sup> Meeting**

Speakers at our February 5<sup>th</sup> Branch meeting were Des and Marjorie McMahon. They gave an entertaining and informative talk about researching the history of their 110 year old villa on Tukapa St, Westown.

Marjorie told of events prior to their purchase of the villa. Des had been seconded to New Plymouth in 1978 and they found that living in a small school house was more than difficult with a family of five children. Consequently when a large two storeyed villa came on the market it had immediate appeal and they purchased it in a part swap for their Tauranga home.

Des told us that the previous owner was a Captain Timothy Wood the Chief Pilot for the Taranaki Harbour Board. The Captain who had an interest in "doing up" old houses had fortunately saved the villa from a planned demolition by a local builder through arriving half an hour earlier than the builder, to successfully persuade the owner to sell to him instead.



Des' interest in the history of the villa was taken a step further when he had an unexpected visit from a retired accountant Eric Laird who told him that 'I was born in that room up there'. Des took the opportunity to tape Eric's recollections and those of his sister Nancy of life in the villa as well as its history.

The house, originally called 'Whareora' (House of Well Being), had been built in 1898 by Hal and Annie Goodacre in grounds of some 2¾ acres. The Goodacre family had established the Egmont Shoe and Boot Factory and Store in New Plymouth and became leading citizens in New Plymouth at turn of the century.

Des researched land title records and New Plymouth historical records to list all the previous owners of the villa and gain information about the UK origins of Hal Goodacre, the development of his factory and his accomplishments as a businessman and as a prominent citizen.

Des has set out the history of the villa in two large loose-leaf folders as he found this ideal for inserting new information as it came to hand. Old photos, stories, newspaper articles and personal accounts have brought to life the history of an historic home where otherwise it may well have been forgotten.

## **Next Meeting**

**4th March** Rev Philip Brown: will talk about his collection of Militaria - Military Medals. Members can bring along medals and photos of uniforms for the Rev Philip to identify.

<b>Programme 2008</b> to July – (later meetings to be arranged)	
<b>1st April</b>	ANZAC theme; talk by Mike Merrick about VC winner John Gilroy Grant
<b>6<sup>th</sup> May</b>	NP Base Hospital Archives (to be confirmed).
<b>3<sup>rd</sup> June</b>	Railway houses in Welbourn, New Plymouth. A talk by Janice Murdoch.
<b>1<sup>st</sup> July</b>	Sharing Evening- Skeletons, Black Sheep and Heirlooms

## **NZSG Matters**

### **12<sup>th</sup> Australasian Conference on Genealogy and Heraldry in 2009**

Instead of its usual Queen's Birthday Conference next year, NZSG will host the Australasian Congress at King's College from 16-20 January 2009.

The Congress theme is *Preserving the Past for the Future* and a number of internationally recognised speakers including Dick Eastman, John Grenham, Michael Gandy and Sherry Irvine have been invited.

More information can be obtained by visiting the Congress website at [www.affhocongress2009.org](http://www.affhocongress2009.org) and updates will be provided through the year in *The Genealogist*.

## **From our Branch Library**

### **Researching ancestors who lived in other parts of New Zealand?**

Often the foremost question for the researcher is what resources are available in the areas of my research and where are they held? The answer may well be found in the NZSG small booklet series *Regional Research Repositories in New Zealand* held in the Branch library. The series is an excellent means of locating sources where information can be gained at main and local museums, libraries, church offices, Archives NZ, local body offices, NZSG branches' holdings and many others.

The series covers 21 districts from Northland to Stewart Island, grouped into 10 Regions using the County boundaries as at 1926. Each booklet contains a short but useful history for each of the districts covered. The complete series are held in the Branch library.

**NOTE The Branch Library will be open Easter Saturday 22<sup>nd</sup> March 10am-12noon.**

### **Taranaki Biographical Index (TBI) – a milestone reached.**

Just recently TBI Version 20 has been expanded with the addition of 88,882 school admission records to now total 411,000 individual records making it an extremely versatile and powerful tool for those researching family history in Taranaki

Among the Index contents are references to information sources held at the Branch Library and Puke Ariki Library for:

- Many cemeteries in the province.
- Church BMD's Undertakers' and/or Burial records.
- New Plymouth Shipping Passenger lists 1852 -1890
- School Admissions for local schools up to 1943
- Newspaper BMD notices
- Taranaki Wills and Crown Grants
- Swainson Studio negatives

The TBI is searchable on computers in the Branch Library, or requests accompanied by a donation, can be made to Bruce Bellini, TBI Librarian, 98 A Queens Rd, Glenavon, New Plymouth 4312.

### **New Index programme available**

A Branch member Bill Irving has developed a programme which is an index to all the *Practical Family History* magazines held in the library to date. The programme enables a search to be done of the magazines' contents by subject and name. Bill has set up the programme on computer 2 in the library..

Having opened the programme called "*A Shortcut to Practical Family History Magazines*" you need to enter your subject in the yellow window on the opening display on screen. Begin by inserting in the yellow window a star (asterisk) followed by the subject or name you wish to find followed by a second star; then hit Enter followed by Search. For instance inserting the subject \*Suffolk\* brings up on screen three articles in the set of magazines to do with this and includes page references.

#### **Newly arrived on shelves.**

*New Zealand Memories Magazine* for February/March 2008 which has articles on Coaching Days in the South Island; Southland and Gisborne/East Cape regions; the shipboard diary of 13 year old Lucy Howard written while travelling to NZ on the *Charlotte Jane* in 1850; the Six O'clock Swill: Pioneer winemaker Simon Ujdur in Henderson and the story of Anatoki gold in Nelson

### **OF INTEREST**

#### **More National Burial Index Records available at FindMyPast.com**

The pay-website [www.findmypast.com](http://www.findmypast.com) has made available on line a further 1.2 million National Burial Index Records to researchers. Under an arrangement with the Federation of Family History Societies the records of the local Family History societies in Somerset, Essex and Dorset have been transferred to *findmypast.co*.

#### **How to Research the History of a House - a Guide**

The Canterbury Museum on its website [www.canterburymuseum.com](http://www.canterburymuseum.com) has available a useful 12 page guide to researching the history of a house. This can be downloaded for free as a PDF. Although the information refers to the Christchurch area, the same principles would apply in other areas of the country. The guide gives advice on using LINZ information, Rating Rolls and Valuation, Local Body Archival holdings, Sources of Old Photos and Street directories among others.

**Puke Ariki News – a new venture** The former journal room in the Research Centre is to be modified to serve as a Small Group Presentation space. This will involve the installation of a large Smart Board which possesses both Intelligence and Interactive capacity. The Board itself is able to reformat what is handwritten on it into document form. Individuals in a participating group are able to use remotes and to interact with others' contributions on the Smart Board. Gary Bastin, the Director of the Research Centre sees Database Training for small groups as one of many uses for the new room.

### **This is Your Past**

The committee has approved "*This is your Past*" as the Branch's major project for 2008 subject to sufficient members becoming involved. The project is a local variation of the popular BBC series "Who do you think you are." Two New Plymouth residents will be selected and the branch will research and write an **abbreviated** family history/tree. One will be a "Prominent Person" and the other a "Lay Person." The project will be in partnership with the Midweek newspaper who over a period of months will publish articles following the researching and results as they unfold. This is an exciting opportunity for us to demonstrate to the public the resources and skills we have in our branch and locally. The objective of the project is to promote family history and is targeted at people who have never undertaken family research or who have done so in the past but may have lost interest.

It is proposed at this stage to have 2 research teams consisting of about 4 members each with one being the Team Leader. Ideally the teams will be a mix of experienced and less experienced members. The project will only commence if sufficient members are willing to participate. Mike Merrick is the Project Coordinator and he will explain the project in more detail at the branch meeting on 4th March. (supplied by Mike Merrick)

### **Useful Websites**

**Australian connections:** <http://www.bdm.nsw.gov.au/familyHistory/search.htm> This lists births, deaths and marriages and can be searched using full names or just a surname. 17 million records are held including Church records from 1788 -1855 and BDM's from 1856 to the present.

**Auckland arrivals:** from shipping news in papers. Covers the years 1838 to 1886 and is searchable by name. <http://www.aucklandcity.govt.nz/dbtw-wpd/passengers/passenger.html>

### **Research Tip**

When requesting information for genealogical purposes about a Birth, Death or Marriage from Levin House, Lower Hutt [www.bdm.govt.nz](http://www.bdm.govt.nz), it often pays to ask for a Printout which is a copy of the information from the registration. This will often have additional information not always placed on a Certificate which is an official document.

### **Epitaph Humour** supplied by John Pickering

John Penny's gravestone in Wimborne, England carries this inscription:

Reader, if cash thou art in want of any,  
Dig six feet deep and thou wilt find a Penny.

And this in a cemetery in Hartscombe, England

On the 22<sup>nd</sup> June  
John Fiddle went out of tune.

Your contributions for this newsletter are welcomed. Email to Peter Wicky Editor:  
[wicky.family@ihug.co.nz](mailto:wicky.family@ihug.co.nz)