

New Plymouth Genealogy Society Incorporated

Newsletter



Number 9

September 2022

Branch Library: Open free to members. A small charge to visitors.

Opening Hours: Monday: 10 am to 12:30 pm
Saturday: 10 am to 12 noon

Genealogy Basics

We are planning on running a series of beginning genealogy classes, presented by Gail Tanner.

This is in response to the interest that has been shown so far. Some people want an introduction to genealogy, so they start off on the right foot, others are keen on a refresher.

There is a lot to know about how to everything in relation to genealogy. Such as research techniques, citing sources, recording information, managing collected documents, publishing and presenting your findings.

Dates and other details are yet to be confirmed. So if you are interested, please contact Gail Tanner at 027 376 0630 or gailjt@outlook.com.



Next meeting: 7:30pm Tuesday 6 Sept 2022

Finding William

A Taranaki Tale

A tale of research, as where we start is not necessarily where we are going to finish, or who we are going to finish with!

There are many tales of mystery and intrigue in the Taranaki. This is but one of them. All will be revealed on the night. Come along to hear Paul Ashton and his tale of discovery.



Convenor: Gail Tanner 027 376 0630
Secretary: Jackie Sewell
Treasurer: Sharyn Guthrie
Committee: Lorraine Austin
Lea Bellini
Karen Crowe
Graeme Jury
Peter Keegan
Annette Larsen

New Plymouth Genealogy Society Inc
c/- Gail Tanner
122 Wairau Road
New Plymouth 4314

Meetings: 7:30 pm, first Tuesday each month
at society rooms, Moturoa Shopping Centre
access is off the Whiteley Street car park

Email: newplymouthgenealogy@gmail.com

Website: www.genealogynp.com

August Meeting - Wikitree

At our August meeting, Bill Irving showed us the [Wikitree](#) online family tree. This website is building one enormous family tree, and everyone can contribute to it.

There are some other websites that host a collaborative family tree than users can contribute to. The other big one is [FamilySearch](#), and there are some others, like [TribalPages](#).

Although it doesn't provide source documents or records, Wikitree is a great way to share research with other people working on the same ancestors. As with other online trees, the data is only as good as what people have entered. Wikitree has a strong honour code and edits are traced to enable checking by other users. For entries earlier than 1700, users must pass an exam, and there is another exam for editing earlier than 1500.

Wikitree is free to use, so check it out and see what assistance it can be for your research.

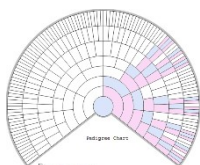


DNA Interest Group

Next meeting is on Sunday 18 September at 13:30 hrs at our rooms in Moturoa.

I'll be showing you the unique inheritance pattern of the X chromosome, the 23rd chromosome. We all have an X chromosome, females have two and males have one. The inheritance pattern of this chromosome follows a strict pattern which can help you rule in and rule out potential lines of your family.

Come along with any questions, ask for help or guidance from those of us at the meeting. Bring your laptop, tablet or login and we just may be able to help you work out another part of your genealogy research.



Sharyn Guthrie

Convenor's Report

I can't believe it's September already. Spring has sprung. Last Sunday we had the afternoon tea to thank our volunteers who work so diligently in the background indexing, sorting, photographing, and generally keeping our record numbers growing, as well as those who work in the library for us. A couple couldn't make it, but we had a catchup chat and a cuppa and plenty of cake. Certificates were given as a sign of our appreciation.

Recently I gave a talk at the Fitzroy Men's Friendship Club, An Introduction to Genealogy, which went down well, with many of them coming up to me afterwards to tell me what they have been doing with their own family memories. If you know of any group who may be interested in a talk of this nature, let me know.

Don't forget if you have had your DNA done and are interested in learning how to get the best information from your results, we have a DNA group which meets once a month – usually the last Sunday of the month. Sharyn Guthrie is a font of knowledge and will also talk to you one on one if you are just starting out on your DNA journey and want to learn more. Look for the notice in this newsletter for the date and time of the next class.

Last month it was put in this newsletter that I am willing to take a Beginners Class for Genealogy. I do this for the U3A group, once a month and am willing and able to do one for our group members. There would be no charge other than the \$2 door charge, to cover power etc. It would be held on the second Thursday of the month at 9:30am. It will begin when I have the numbers, so I am after a few more pupils. Eight or nine people would be a good class size. Let me know if you are interested.

This month's talk is by Paul Ashton, who is a member who lives in Auckland but is in New Plymouth at the moment. Called "Finding William, A Taranaki Tale", it should be an interesting journey through the process of Finding William.

See you at the meeting.

Gail Tanner
Society Convenor

Searching Birth, Death & Marriage Records

The [births, deaths & marriages online](#) website enables you to search historical NZ records for:

- births at least 100 years ago
- marriages at least 80 years ago
- deaths at least 50 years ago

There is a fee to get a copy of the record, but you can search for free. This can be a good way to confirm or find a date record, or confirm names.

The form on the website requires you to enter a family name, as well as a from date. This can be difficult if the name has different spellings, or was misspelt on the record, or you don't know the name.

However, you can enter a full stop in the family name field and this acts like a wild card (*). This can return a lot of results, so it is useful if you can narrow down the date range. Another tip is to sort by one of the fields, such as father's name or age.

Another use of the online search is to find or confirm the date of birth, death or marriage. Start with a wide date range to find the person you are researching. Then progressively narrow down the date range until it is just one day.

For example, if the person shows up in the date range 01/01/1890 - 31/12/1890 but not in 01/01/1890 - 30/06/1890, then they must be in the second half of that year. So search in the July to December range to narrow it down.



Early Taranaki Research online

Graeme Kenyon has done an enormous amount of research into early history of New Plymouth and some of the early emigrants from the UK. He has written books on related topics, such as *The Battle of Waireka*.

Graeme's [website](#) has a lot of his research available for download. This includes family history scrapbooks for the Kenyon, Hooper, Oliver, Ducker, Rawlinson, Roebuck, Ward families and others.

<https://kenyonz.com>

Photo News

This is based on an article in a recent newsletter of the Hutt Valley branch.

In 1954, Bob Logan began publishing the Gisborne [Photo News](#) from his home. This was a monthly publication with photographs and news of local social events like sports, parties, weddings, etc.

At it's height, Logan Publishing was printing Photo News editions for nine regions around New Zealand. Many of these historical editions are now available online. Click the links at the titles below.

[Gisborne Photo News](#) 1954 - 1975

[Nelson Photo News](#) 1960 - 1972

[Whangarei Photo News](#) 1960 - 1966

[Northland Photo News](#) 1966 - 1973

[New Plymouth / Taranaki Photo News](#) 1957 - 1981

[Tauranga / Bay of Plenty Photo News](#) 1962 - 1970

[Franklin Photo News](#) 1967 - 1973

[Hawkes Bay Photo News](#) 1958 - 1967

Some copies of the Rotorua Photo News are held at the Rotorua District Library, and of the Whangarei Photo News at the Alexander Turnbull Library.

The New Plymouth & Taranaki Photo News is indexed in our TBI, and there are scans of most editions on our society computers.

Here at
PHOTO NEWS
we make
60,000
magazines
every month
*Make sure of
your copy!*
If you don't get
personal delivery*
place a *regular*
order with your
newsagent or
family store

MAGAZINES
at

- Whangarei
- Tauranga
- Rotorua
- Gisborne
- New Plymouth
- Wanganui
- Nelson

We are pleased to
announce the
appointment of
Wiltcombe & Toombs
Ltd. as Photo News
agents in
Auckland, Rotorua,
Wellington, Nelson
and Christchurch.

*Available in Tauranga, Mount Maunganui,
Rotorua, New Plymouth, Wanganui, Nelson,
Richmond, Stoke, Motueka.

Library Roster: September

Monday 10 am to 12:30 pm
Saturday 10 am to 12 noon

Sat 3 Sep Karen Crowe
Mon 5 Sep Charles Le Breton
Sat 10 Sep Graeme Jury
Mon 12 Sep Lorraine Austin
Sat 17 Sep Lea Bellini
Mon 19 Sep Annette Larsen
Sat 24 Sep Sharyn Guthrie
Mon 26 Sep Jill Jackson
Sat 1 Oct Karen Crowe
Mon 3 Oct Charles Le Breton

Facebook Group



Think Facebook is not for you? Maybe you are not aware of the many Facebook groups there are to help you in your genealogy research. Join our group's own Facebook group to start and you may begin to see the value of it.

It's a place to share research questions, help others and learn more. I'll be doing a talk about it at our November meeting. Meanwhile our New Plymouth Genealogy Society Facebook group has 132 members, some are from our own group but many are those with Taranaki research who live around the world.

Sharyn Guthrie

Internet Connection

The internet connection for our branch rooms is generously sponsored by Primo.



Please consider Primo for your internet service. Ring them on 0800 123 774 or visit their website:

primo.nz

Covid-19 Protection Framework

Covid-19 is still about and causing illness. Please follow the rules and keep everyone healthy.

- Stay home if you have any symptoms (dry cough, short of breath, loss of smell, etc).
- Wear a face mask when at the society rooms.



There is more information at covid19.govt.nz.

Library News

Family Tree (Sept)

Who Do You Think You Are (Aug)



Newsletters received;

Balclutha, Canterbury, Dunedin, Feilding, Gore, Hutt Valley, Nelson, Otaki, Palmerston North, Papakura, Porirua, Southland, South Waikato, Stratford, Wellington

If you would like an email copy of newsletters from another genealogy society or branch, please contact Peter Hewett.

Newsletter

If you have any comments or suggestions for the newsletter, please contact Peter Hewett at peter.hewett@gmail.com.